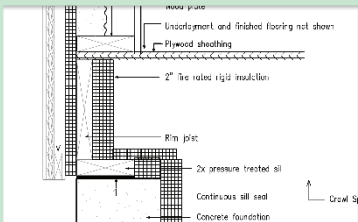
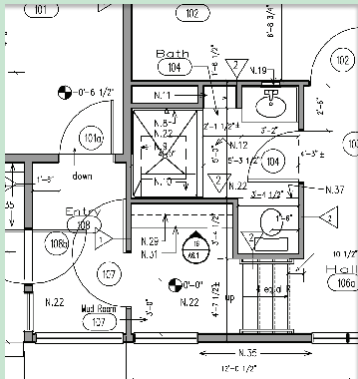


## Additional Services

A single Archisketch design session is sufficient for about 70% of Archisketch clients. They take the sketches that we generate to their builder, who takes it from there. Occasionally, clients want us to go further, either to generate more detail or to explore design options in more depth. Some typical additional services are as follows:



### Field Measurements:

If you prefer, we can make the measurements and take the photographs of the existing conditions. We usually bill hourly for the service.

### Additional Design Sessions:

These occur because time is limited at the first session, the design problem requires more exploration than we can do in one session, or possibilities arise that our clients have not considered and want to give some thought to. We bill the same way for all design sessions, by time @ \$40 per quarter hour.

### Design development between sessions:

Refinement of a design between sessions. We bill hourly at the rate of \$80-\$100 per hour for this work.

### Cost Estimating:

Coordination of a contractor or professional estimator to develop a detailed cost estimate. We bill hourly for our part of the work and pass along the estimator's charges, which are determined in advance.

### Structural Engineering:

Sometimes a project poses a structural problem that the client or builder wants help with. We provide this service either directly, charging by time, or we engage a structural engineer to help us for a predetermined fee.

### Construction Plans and Specifications:

Most small projects are done without detailed plans, which means that the builders solve problems and choose components as they go along. Drafted plans and specifications offer the owner more control over the quality and content of the work as well as the chance to secure comparable competing bids based on defined standard. We will quote a fixed fee for plans and specifications after the design is defined. They commonly cost between 5 and 10% of the construction budget.

### Custom Cabinet Design:

Some projects include special cabinetry that our clients prefer to define on paper before construction. We can provide the design in two and three dimensional plans for bidding and construction. The charge for this can be either hourly or a pre determined lump sum.

### Lighting Design:

The lighting in most small projects is designed by the owner or the electrician. In some cases, our clients are aiming for a special solution that requires a more studied approach. We typically offer lighting design as an hourly or a lump sum fee service.

### Construction Phase Consulting:

We are available for consulting and/or regular inspection of the work in progress during construction. We provide this service on an hourly basis.